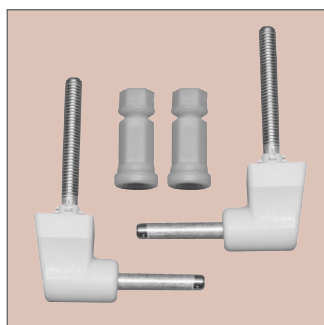


The 16SS Inox Hybrid STA-TITE® is designed for universal pans and is made from durable, Tecnoplast™ thermoplastic material. It has special Hybrid Hinges™ that combine the benefits of both stainless steel and thermoplastic to provide a commercial-grade hinge. This seat also features STA-TITE®: the patented fixing system that always stays tight and takes the guesswork out of installation. The lower portion of the nut shears off when the proper tightness is reached, so you cannot over-tighten.



SEAT FEATURES



STA-TITE® - patented fixing system that will not loosen! Simple, "no mess" installation ensures your seat stays tight on the pan



Virtually Unbreakable - made from Tecnoplast™ material that provides superior durability

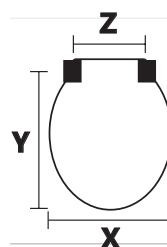


Recyclable - made from Tecnoplast™ material that is 100% recyclable

- Tecnoplast™ thermoplastic offers superior durability
- Fixed hybrid hinges
- Fits majority of manufacturers' universal shaped pans
- Open front design for commercial environments and for use with open front pans

WEIGHTS & DIMENSIONS

- Individual Seat Weight: 1.43 kg
- 6 seats per master carton



X: 362 mm

Y: 422 mm

Z: 155 mm

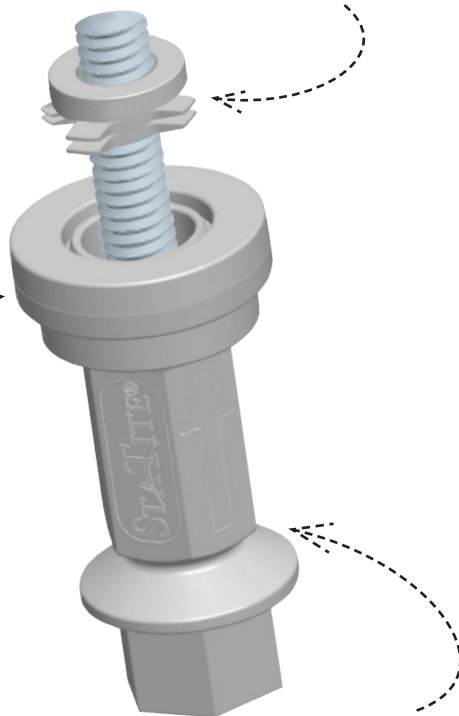
Understanding...

STA-TITE®



Are you tired of a loose toilet seat?

Unique finned
bushing prevents
shifting in toilet
pan mounting
holes



Integrated
washer provides
superior
clamping force

Nut shears off at
precise tightness every
time to lock down seat!

Easy:

One-piece integrated nut

Fast:

No hassle with glue or adhesives

Secure:

When the nuts shear off, the
seat stays tight

Effective:

This tried and tested solution will
eliminate costly call-backs for
loose toilet seats

Installation is Fast & Easy:



1) Finger Tighten



2) Tighten with Spanner



3) Snap to Secure