



Hinged bar to be fixed to the wall with vertical swivel with roll holder. Length 800 mm. Stainless steel. Black finish

Description

- Folding support bar to fix on the wall.
- Suitable for support in washbasins, wc-bidet, showers and bathtubs.
- Designed for toilets adapted for people with reduced mobility.
- Bacteriostatic stainless steel black finish.
- Also available in satin (NOFER 15051.80.S), gloss (NOFER 15051.80.B), and white (NOFER 15051.80.W) finish.

Technical characteristics

Material: AISI 304 stainless steel

Finishing: Black

Bar diameter: Ø32 mm

Bar length: 800 mm

Anchor plate dimensions: 300 height x 100 width (mm)

Recommended installation height: 70-75 cm top bar to floor

Maintenance

Cleaning with a cotton cloth slightly moistened in a neutral soap solution is recommended. Then rinse and dry.

Suggested text for prescription

NOFER folding support bar made of stainless steel, black finish. With brake, roll holder and anti-conductive kit. Length: 800 mm. Tube bars Ø32 mm.

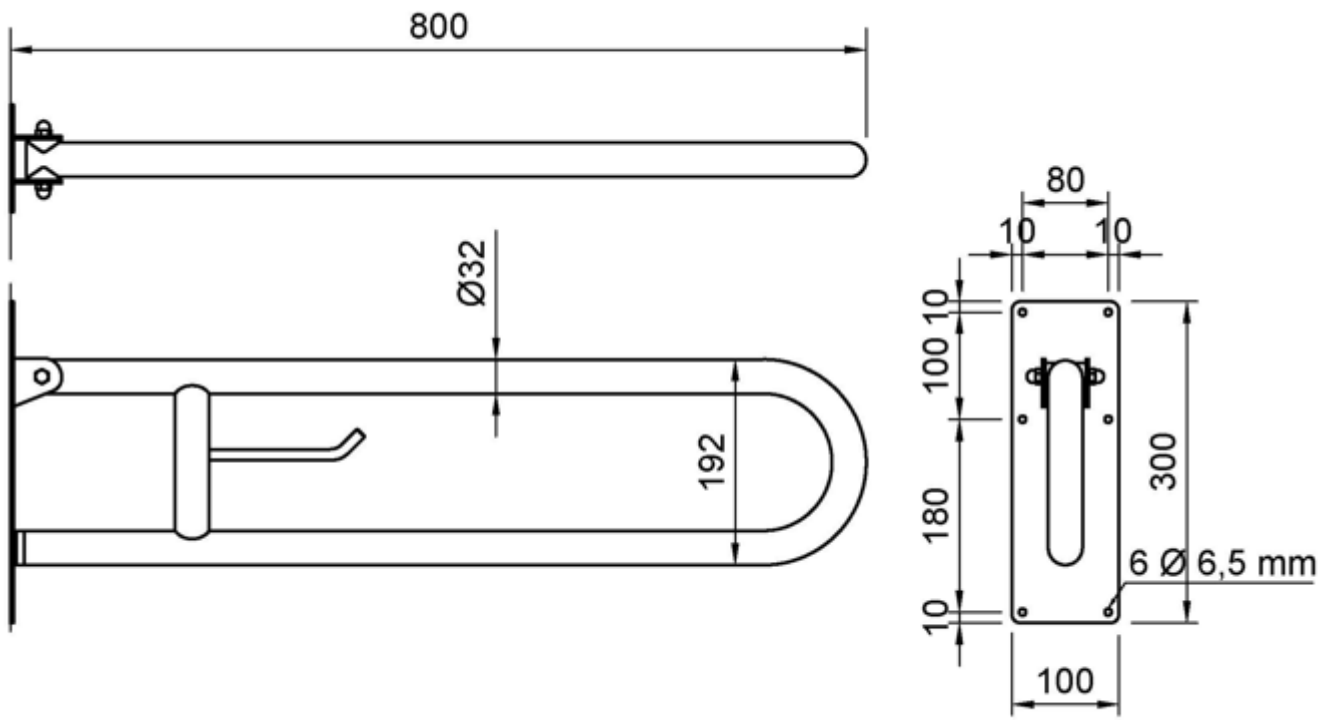
Components

- Stainless steel hinged bar.
- With brake system.
- With roll holder. Also available without roll holder (NOFER 15051.SP.80.N)
- Stainless steel screws included.
- Anti-conductive kit included.

Fixing

- Stainless steel wall anchor plate.

Dimensional drawing



Ctra. Laureà Miró, 385-387
 08980 | Sant Feliu de Llobregat,
 Barcelona - Spain
 T. +34 934 742 423
 F. +34 934 743 548
 nofer@nofer.com
 www.nofer.com

RELATED PRODUCTS



15051.60.B



15051.60.F



15051.60.N

These specifications may be modified and/or amended due to manufacturing requirements.