

Hinged bar to be fixed to the wall with vertical swivel with roll holder. Length 800 mm. Stainless steel. White finish



Suggested text for prescription

NOFER folding support bar in stainless steel, white finish. With brake, roll holder and anti-conductive kit. Length: 800 mm. Tube bars Ø32 mm.

Components

- Stainless steel hinged bar.
- With brake system.
- With roll holder. Also available without roll holder (NOFER 15051.SP.80.W)
- Stainless steel screws included.
- Anti-conductive kit included.

Fixing

- Stainless steel wall anchor plate.

Dimensional drawing

Description

- Folding support bar to fix on the wall.
- Suitable for support in washbasins, wc-bidet, showers and bathtubs.
- Designed for toilets adapted for people with reduced mobility.
- Bacteriostatic stainless steel white finish.
- Also available in black (NOFER 15051.80.N), gloss (NOFER 15051.80.B), and satin (NOFER 15051.80.S) finish.

Technical characteristics

Material: AISI 304 stainless steel

Finishing: White

Bar diameter: Ø32 mm

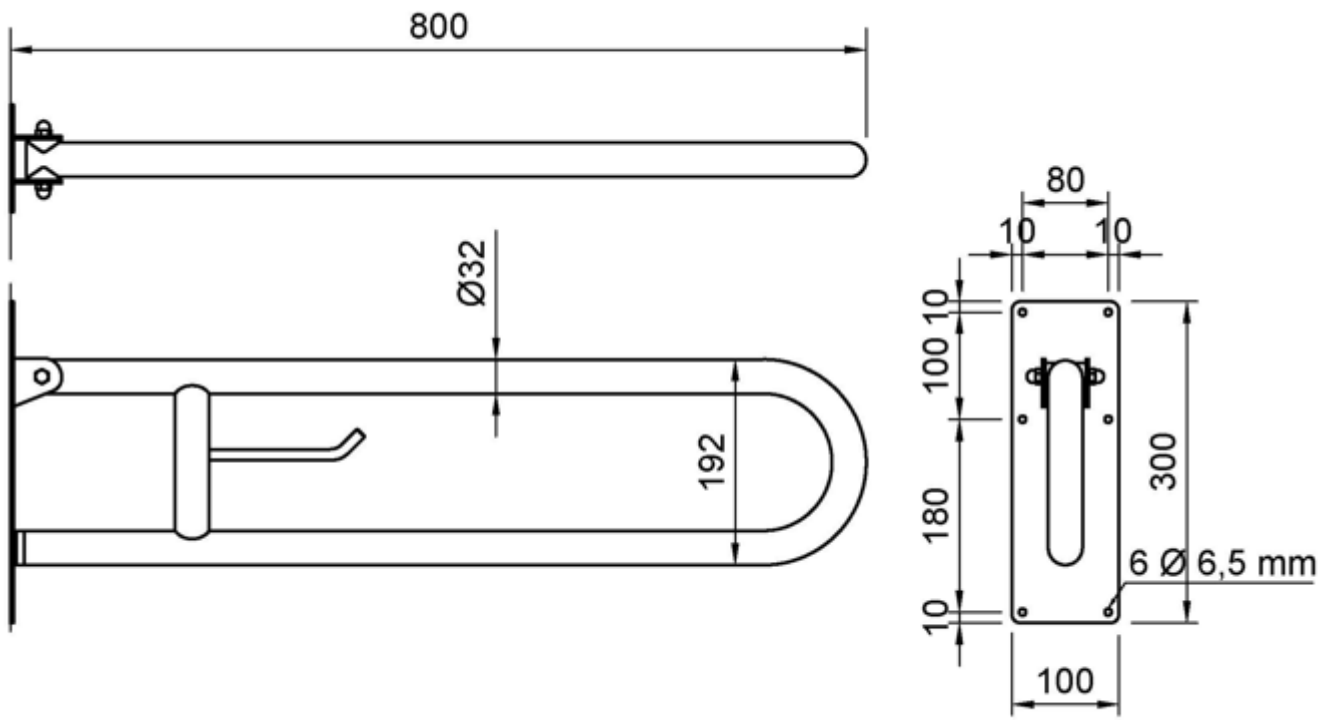
Bar length: 800 mm

Anchor plate dimensions: 300 height x 100 width (mm)

Recommended installation height: 70-75 cm top bar to floor

Maintenance

Cleaning with a cotton cloth slightly moistened in a neutral soap solution is recommended. Then rinse and dry.



Ctra. Laureà Miró, 385-387
 08980 | Sant Feliu de Llobregat,
 Barcelona - Spain
 T. +34 934 742 423
 F. +34 934 743 548
 nofer@nofer.com
 www.nofer.com

RELATED PRODUCTS



15051.60.B



15051.60.F



15051.60.N

These specifications may be modified and/or amended due to manufacturing requirements.